



Original article

Application of Mobile Fluorescence Spectroscopy as a Method in the Determination of Varietal Differences in Lettuce (*Lactuca Sativa*) Seeds

Vanya Slavova *

Department of Plant Breeding, Maritsa Vegetable Crops Research Institute, Agricultural Academy of Bulgaria, Bulgaria

Abstract

Standard methods used for seed quality are relatively slow and require expensive supplies. The present study aims to establish the application of mobile fluorescence spectroscopy as a method to determine varietal differences in lettuce seeds. An optical mobile installation for the study of lettuce (*Lactuca sativa*) seeds has been successfully set up and tested. The proposed method includes the examination of lettuce seeds of different varieties with a mobile fiber optic system by means of fluorescence spectroscopy. Spectral distributions are unique to seeds of a particular variety. This fact justifies the use of the plant to recognize available lettuce seeds of unknown origin in a non-invasive way with high accuracy. The stability of the breeding line and its common blacks with an established variety of the same species can be monitored by monitoring the signal intensity. The stability and signal intensity level is close. The spectral distribution of wavelengths of the reflected emission of the studied lettuce seeds reflects the characteristic distribution of the standard varieties. The installation can be applied with high accuracy to study lettuce seeds in the field.

Keywords: Mobile spectral installation, Fluorescence spectroscopy, Lettuce seeds, Different varieties.

Received: 89 August 2023 * **Accepted:** 01 October 2023 * **DOI:** <https://doi.org/10.29329/ijjaar.2023.602.4>

* **Corresponding author:**

Vanya Slavova, Department of Plant Breeding, Maritsa Vegetable Crops Research Institute, Agricultural Academy of Bulgaria, Bulgaria.
Email: vania_plachkova@abv.bg

INTRODUCTION

Lettuce (*Lactuca sativa*) or garden lettuce is an annual plant. There are three varieties in total - cephalic, leafy and romen. Lettuce is grown in a 3-4-year crop rotation with a mandatory two-year interval between growing seasons due to the accumulation of soil infections (Mou, 2009). Lettuce is best planted in areas where grains, potatoes, common cabbage, garden leeks or celery grow (Mou, 2008).

Lettuce provides the body with fiber and cellulose, improving digestion. It contains vitamins A, C, E, K, the minerals potassium, calcium, magnesium, iron, phosphorus, manganese, selenium and zinc (Yang et al., 2022). Lettuce is also rich in thiamin, riboflavin, niacin, folate, pantothenic acid and choline. This wealth of nutrients provides the body with numerous health benefits (Jung Kim et al., 2016).

The development of fast and accurate methods such as optical diagnostics based on non-destructive analysis will help to overcome the barriers in studying and monitoring the processes related to seed germination and guarantee quality planting material and seeds for agro-industry and farmers (Huyan et al., 2018).

The optoelectronic methods for assessing the quality of plant seeds are non-contact, fast-acting, selective, and do not destroy the integrity of the examined sample (Zhang et al., 2021). On the basis of these, it is possible to create non-invasive methods for the evaluation of lettuce seeds. Until now, there has been no data on their re-search using the proposed method. Obtained results in the study of cereal seeds. Based on his research, emission excitation wavelengths of 362 nm, 424 nm and 485 nm were established. In these studies, it was found that during the ripening of seeds of cereal plants (for example, wheat, oats, and corn), the ratio of their excitation levels and changes in radiation for immature seeds is characteristic of the short-wave range, and long-wave prevails in mature seeds (Su et al., 2019). The dependence of the ratio of long-and short-wavelength fluxes on the maturation time increases and can be statistically reliable approximated by the linear functions required to create a database.

Belyakov et al (2021) developed a sensor for determining the level of physiological maturity of seeds, allowing for reflection seeds with two sources at certain wavelengths and recording the photoluminescent flow with appropriate receivers to determine the stage of seed maturation. The maximum luminescence is less pronounced than in the excitation spectrum.

Measured spectral luminescence characteristics of forage plant seeds were measured by scarification during the study. The spectral characteristics of the seeds are increase, due to the scarification of forage plants (Vithanage et al., 2017). It was established that in the studied seeds with repeated scarification, the observed qualitative changes in the excitation spectrum were related to the appearance of a new maximum at a wavelength of 423 nm. Likewise, for lettuce seeds from four standard

varieties, the obtained results can be used to create a schematic fiber-optic configuration for characterization of planting material from lettuce.

The excitation and photoluminescence spectra of seeds of agricultural plants, legumes (Rewatrak, 2020) and tomatoes (Li et al., 2019) were measured using a previously developed method. The typical excitation spectrum was found to be in the range of 355–500 nm and to have two maxima: the main one at 424 nm and the side one at 485 nm. The emission spectrum is in the range of 420–650 nm and has a maximum in the region of 500-520 nm.

The water contained in the planting material (together with impurities) is expressed as a percentage of its total mass (Waldir et al., 2014). In addition, it is possible to evaluate the percentage of their normal seed germination under optimal conditions for germination in a period shorter than the period for which the germination rate is determined, which will determine their germination energy.

The present study aims to establish the function of fluorescence spectroscopy as a mobile method for the analysis of representatives of different varieties of lettuce seeds. They will be compared in terms of determining the spectral distribution. The application of optoelectronics in the analysis of lettuce seeds will lead to a rapid and correct determination of the sowing rate, since it will be possible to assess the germination capacity of all clean seeds. A study of lettuce seeds from standard varieties was conducted, which aims to develop a non-invasive method for their quality, through the application of the system engineering approaches of modern optoelectronics.

MATERIALS and METHODS

Material

Seeds of four standard lettuce varieties and one first generation hybrid variety were investigated:

- Paris White - Medium early lettuce variety with upright, large heads, dark green leaves and creamy white core. With excellent tasty qualities, tender and aromatic. Recommended area for one plant – 25/30 cm
- Lolo roca - The seeds germinate at 1-3° C, and the optimal temperature for their growth is 15-20° C. It forms a medium-sized rosette with curled leaves, colored red-brown at the tips. It forms a medium-sized, red rosette with fresh curly leaves. The variety has exceptional tasty qualities and is very suitable for fresh consumption. Tolerates adverse temperatures well. It can be grown in greenhouses or outdoors. Suitable variety for sowing by pre-prepared seedlings. You can sow every two weeks to maintain a constant crop of delicious lettuce. Vegetation period: 50-55 days.
- Djentelina is an early variety and can be grown year-round, in greenhouses or outdoors. It is characterized by a large, well-shaped rosette, with many curly light green leaves, which

reaches up to 450 years. The Gentilina salad is juicy, tender and very tasty and many useful substances. Its frequent consumption will bring many benefits to your body. The vegetation period is about 60 days. For spring production, the seeds can be sown at the end of January - the beginning of February in greenhouses. When the danger of frost has passed, they can be sown directly. For autumn production, seedlings are sown in September. For autumn production, seedlings are sown in September.

- Hercules- It is suitable for year-round cultivation with 55-65 days of vegetation. Its leaves are dark green and curly and form a large rosette. An extremely resistant variety to blight and downy mildew

Fluorescence spectroscopy

The mobile fiber-optical spectral installation for the study of fluorescence signals is designed specifically for the rapid analysis of plant biological samples. The mobile experimental setup used by fluorescence spectroscopy includes the following components:

- Laser diode (LED) with an emission radiation of 245 nm with a supply voltage in the range of 3V. Its input power is 16 mW. It is housed in a hermetically sealed TO39 metal housing. The emitter has a voltage drop of 1.9 to 2.4V and a current consumption of 0.02A. The minimum value of their reverse voltage is – 6 V
- Rod lens of the achromatic doublet type. It is composed of two bonded lenses with different Schott and Corning dispersion coefficients with an anti-reflective coating. The radii of the two lenses are selected so that the chromatic aberration of one lens compensates that of the other. The tolerance of the diameter of the forming optics is -0.005 mm
- The multimode optical fiber is FG200LEA. It has a core diameter of 200 μm and a step index of refraction.
- Quartz glass area 4 cm^2 . Its optical properties are to be transparent to visible light and to ultraviolet and infrared rays. This allows it to be free of inhomogeneities that scatter light. Its optical and thermal properties exceed those of other types of glass due to its purity. Light absorption in quartz glasses is weak.
- CMOS detector with photosensitive area 1.9968 \times 1.9968 mm. Its sensitivity ranges from 200 nm to 1100 nm. Its resolution is $\delta\lambda= 5$. The profile of the detector sensor projections along the X and Y axes is also designed for very small amounts of data, unlike widely used sensors.

The sample is irradiated by the LED, after which it fluoresces. The emission signal is received at 450 by the rod lens, which transmits it through the optical fiber to the detector.

The three unique advantages of this scheme are:

- Inclusion of the rod lens in the construction of the system. due to their increased light transmission efficiency by almost completely filling the air gaps between the individual lenses.
- Unique design of optical fiber coupling from a headquarters lens in a duralumin housing. In this way, the most optimal for compiling with optical fibers and forming images from laser diodes with low levels of intense losses is achieved.
- Reception of the emission signal at 450

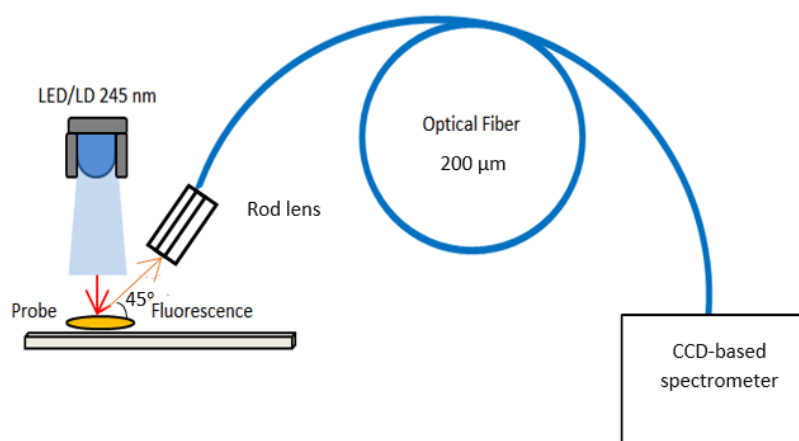


Figure 1. Mobile experimental installation used by fluorescence spectroscopy

Study Indicators:

Spectral analysis - a spectral analysis of 10 tubers of each variety and each breeding line was carried out. The emission spectrum represents the wavelength distribution of an emission measured for a constant excitation wavelength. The excitation spectrum represents the dependence of the emission intensity measured for one scanning wavelength against the excitation wavelength. This spectrum is represented as a function of the wavelength of the light intensity incident on the photodetector in the spectrometer.

Spectral analysis indicators are:

- Exciting wavelength
- Emission wavelength
- Intensity strength

RESULTS and DISCUSSION

During the tests carried out by means of optoelectronic spectroscopy of the seeds, by means of a fiber-optic spectrometer, a clear correlation between their emission signals is visible. This study shows that fluorescence spectroscopy is applicable in the study of lettuce seeds. The spectral setup based on fluorescence signals allows recording both the emission spectrum and the spectrum of the excitation source. The emission spectrum represents the wavelength distribution of an emission measured for a constant excitation wavelength. The excitation spectrum represents the dependence of the emission intensity measured for one scanning wavelength against the excitation wavelength. This spectrum is represented as a dependence of the light wavelength on the light intensity falling on the photodetector, which is part of the installation. The three main advantages of fluorescence spectroscopy are that the method is fast, does not require consumables, and can be performed in situ in the warehouse under uncontrolled conditions. The decision for local measurements was made to avoid damage to the samples during transport and thus, to ensure fluorescence analysis with high sensitivity. The optical properties of lettuce seeds are determined by its energy structure, which includes both the occupied and free electronic energy levels, as well as the energy levels of the atomic vibrations of the molecules or the crystal lattice.

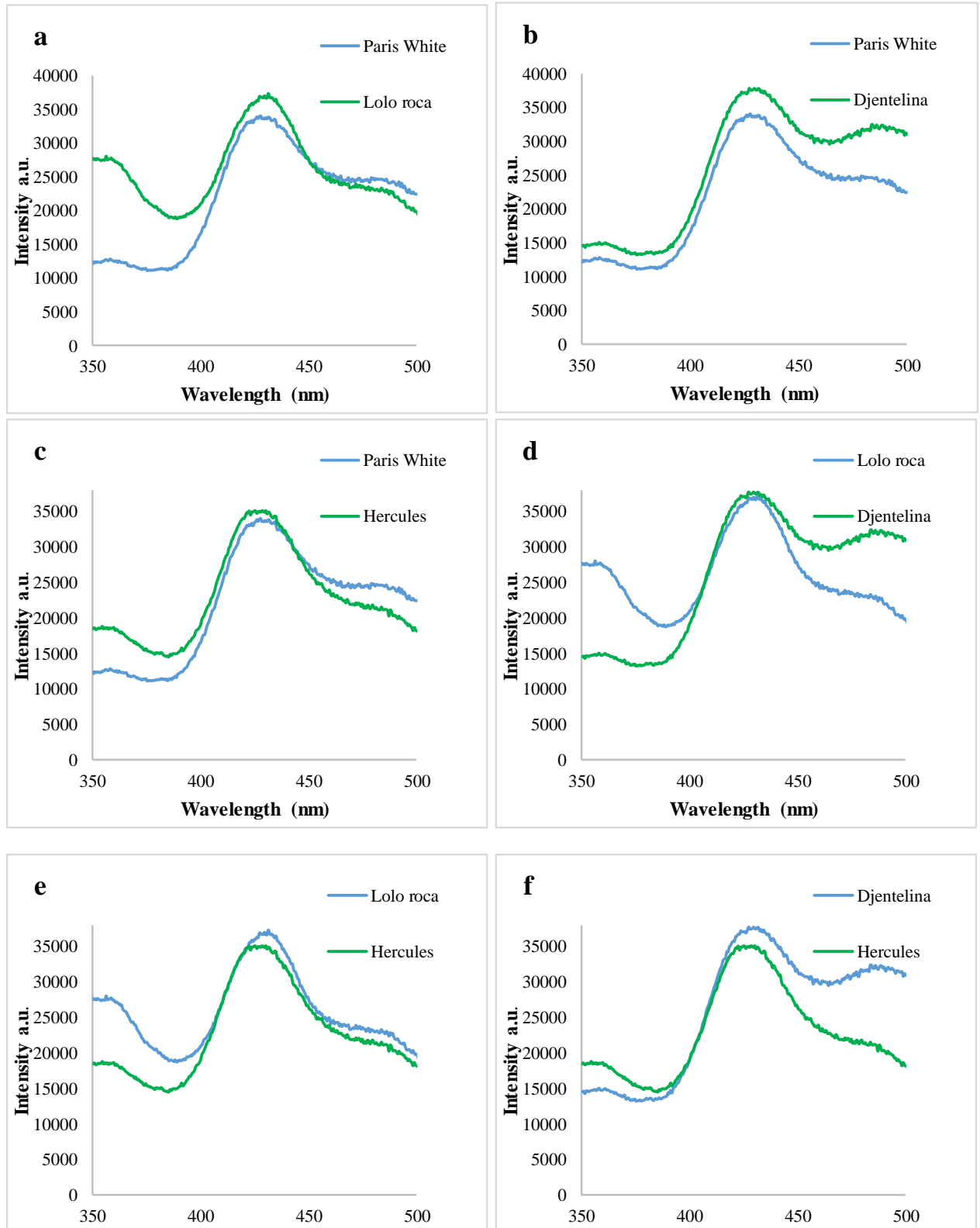


Figure 2. Difference in emission wavelength for seeds of Paris White, Lolo roca, Djentelina, Hercules

The possible transitions between these energy levels, as a function of photon energy, are specific to lettuce seeds, resulting in spectra and optical properties unique to them. Lettuce seeds contain particles smaller than the wavelength of visible light. Particles in the turbid medium, such as lettuce, act as independent light sources, emitting incoherently, causing the samples to visibly fluoresce.

Therefore, fluorescence spectroscopy finds applications for analysis in these seeds. The optical parameters and spectral properties also change as a function of temperature, pressure, external electric and magnetic fields, etc., which allows obtaining essential information about changes in the chemical and cellular morphological composition of lettuce seeds. This gives us reason to claim that, for the first time, mobile fluorescence spectroscopy has been applied to the analysis of lettuce seeds regarding their varietal affiliation under uncontrolled conditions. A difference in the emission fluorescence signal of lettuce seed accession from different varieties is clearly observed.

The results give reason to conclude that fluorescence spectroscopy can be successfully applied as a rapid tool to establish the origin of unknown lettuce seeds in the presence of a rich library of spectra. This will be an applied tool in breeding programs. By tracking signal intensity, one can monitor the stability of a variety and its general characteristics with other varieties. Emission fluorescence signals are close in terms of wavelength localization and signal intensity level.

This is expected from the fact that the varieties have a similar cell morphological composition when grown outdoors. However, the method of fluorescence spectroscopy can be applied to distinguish the seeds of these three varieties, since the correlation in the spectral distribution is sufficiently distinct and distinguishable to determine practically qualitatively the belonging of the seeds to a given cultivar. The method of fluorescence spectroscopy can practically be used to qualitatively determine the belonging of a lettuce seed to a given variety.

Conclusion

The systems engineering approach of adjustment (optical setting up) a specialized fluorescence spectroscopy applied research setup was found to be applicable in the analysis of lettuce seeds from standard varieties and those from first generation hybrids.

A non-destructive method for evaluating pretreated lettuce seeds from standard varieties and those from first generation hybrids are demonstrated.

With a sufficiently well-structured data library, fluorescence spectroscopy can be applied to analyze lettuce seeds from standard varieties.

Acknowledgement

The seeds were produced and analyzed at Siika Naidenova's farm.

I would like to thank all the farm staff for contributing to making this study possible.

REFERENCES

- Belyakov, M., Sokolova, E., Listratenkova, V., Ruzanova, N., Kashko, L. 2021. Photoluminescent Control Ripeness of the Seeds of Plants, E3S Web of Conferences 273 2021, 01003 Interagromash, 345-352
- Huyan, Z.Y.; Ding, S.X.; Liu, X.L.; Yu, X.Z. Authentication and adulteration detection of peanut oils of three flavor types using synchronous fluorescence spectroscopy. *Anal. Methods* 2018, 10, 3207-3214
- Jung Kim M., Moon, Y., Janet C., Mou, B., Waterland, N. 2016. Nutritional value, bioactive compounds and health benefits of lettuce (*Lactuca sativa* L.) *Journal of Food Composition and Analysis*, 49, 19-34
- Li, C.; Wang, X.; Meng, Z. 2019. Tomato seeds maturity detection system based on chlorophyll fluorescence. *Proc. SPIE 10021, Optical Design and Testing VII*, 92-104
- Mou, B. (2008) Lettuce *Handbook of Plant Breeding book series (HBPB, Volume 1)* 75–116 Mou, B. (2009) Nutrient Content of Lettuce and its Improvement *Current Nutrition & Food Science* 5, 242-248
- Rewatrak, V. K. 2020. Microelemental study of *Oryza sativa* L. seeds. *Romanian J. Biophys.* 035-042
- Su, W., Fennimore, S., Slaughter, D. 2019. Fluorescence imaging for rapid monitoring of translocation behaviour of systemic markers in snap beans for automated crop/weed discrimination. *Biosystems Engineering*. 186, 156-167
- Vithanage, M., Seneviratne, M., Ahmad, M., Sarkar, B., Sik Ok, Y. 2017. Contrasting effects of engineered carbon nanotubes on plants: a review 39, pages1421–143.
- Waldir A., Bizzo, Paulo C., L., Danilo J., C., Soto Veiga J. P. 2014. The generation of residual biomass during the production of bio-ethanol from sugarcane, its characterization and its use in energy production *Renewable and Sustainable Energy Reviews* Vol. 29, 589-603
- Yang, X., Gil, M., Yang, Q., Barberian, F. 2022. Bioactive compounds in lettuce: Highlighting the benefits to human health and impacts of preharvest and postharvest practices *Comprehensive reviews in food science and food safety*.
- Zhang, W., Lv, R., Sun, Y., Gu, H. 2021. Fast Evaluation Peanut Oil Quality by Synchronous Fluorescence Spectroscopy and Statistical Analysis. *School of Biotechnology and Food Engineering, Chuzhou University*, 565-574